



Effective cold chain processes require control over the quality of perishable goods and compliancy with the highest industry standards. The compact and easy-to-use disposable PicoLite USB data logger provides a simple solution for temperature monitoring, throughout mass transportation cold chain processes.

Featuring a built-in temperature sensor, activation button, bi-color LED and direct USB connectivity, the PicoLite offers a plug and record solution for every application. The PicoLite is configured by fourtec's intuitive DataSuite software, offering comprehensive data analysis features and alarm notifications.

By reducing overhead related to more complex multi-trip loggers, the PicoLite meets the challenge of combining low cost with reliability for one-trip, value-for-money data logging.

- Low cost, one-trip, disposable logger for an unbroken cold chain
- Internal, high accuracy temperature sensor
- Unique Boomerang feature that automatically creates and emails PDF data report when logger is connected to PC
- Direct USB interface for PC communication
- 16,000 sample memory accommodating long-distance transports
- Software-enabled activation button to start logging and mark time stamps
- Built-in bi-color LED for logging and immediate alarm indication
- Supported by the complimentary DataSuite software for data analysis and alarm notification
- Up to 6-month battery life depending on operating conditions
- Water and dust resistant IP67

INNOVATIVE MONITORING SOLUTIONS

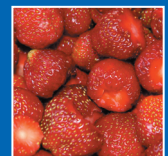
PicoLite Solution ONE-TRIP TEMPERATURE DATA LOGGER



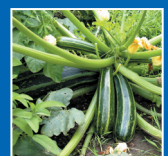
COLD CHAIN
Ensuring quality products throughout the cold chain process



PHARMACEUTICAL
Monitoring environments in labs, fridges, freezers and culture rooms



FOOD & BEVERAGE
Ensuring quality control when transporting perishable goods through the cold chain process



FLOWERS & PLANTS
Mobile temperature tracking of cut flowers and plants throughout the global distribution network

PicoLite Typical Operating Method



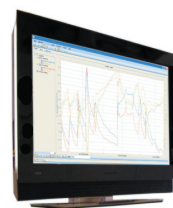
1

Record data using built-in temperature sensor



2

USB data download to PDF report with automatic email delivery



3

Data analysis using integrated DataSuite software

DataSuite Software for PicoLite



DataSuite is a modular software platform, simultaneously supporting multiple fourtec monitoring solutions:

- Software GUI based on proven fourtec platforms
- Multiple data view features
- Alarm features with 2 alarm levels, sending email and SMS notifications
- Reporting module for creating and generating reports with selected distribution
- Analysis features including histogram and statistics with export to Excel and CSV formats

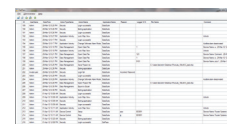
Supported Operating Systems: Windows® XP SP3 / Vista / 7 (32 and 64 Bit)
Minimum Hardware Requirements: Pentium 4.2 GHz Processor or better, 512 MB RAM, 250 MB available disk space

FDA Title 21 CFR Part 11 Compliant



DatPass

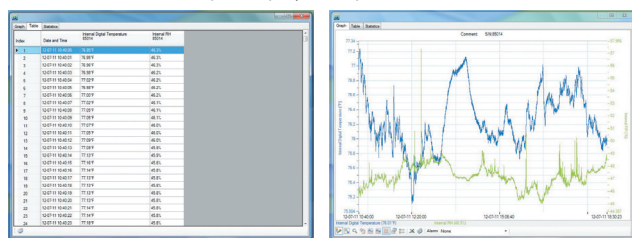
DatPass is a user administration software which supports the assignment of passwords and operating privileges for all fourtec industry application software ensuring CFR compliancy. CFR is a Food and Drug Administration (FDA) issued regulation Title 21 Code of Federal Regulations, Part 11.



DatPass Audit Trail

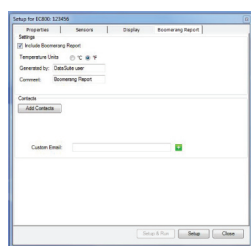
Data View Features

Real-time data in multiple displays (Graph, Table, Statistics)



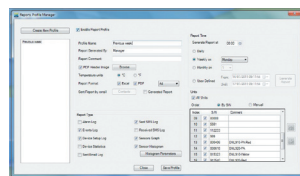
Boomerang Feature

Configure logger setup to automatically create and email PDF data report when connected to computer via USB



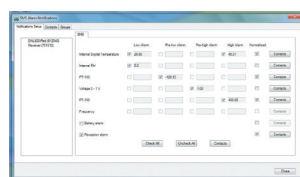
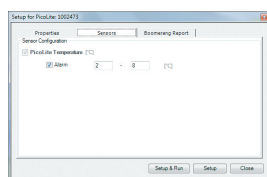
Report Module

The Report module provides the PicoLite user with an intuitive interface for creating and generating reports which have many parameters garnered from the PicoLite units and software. Each report can be emailed to a selected distribution list, at pre-defined time intervals, in PDF and Excel format.



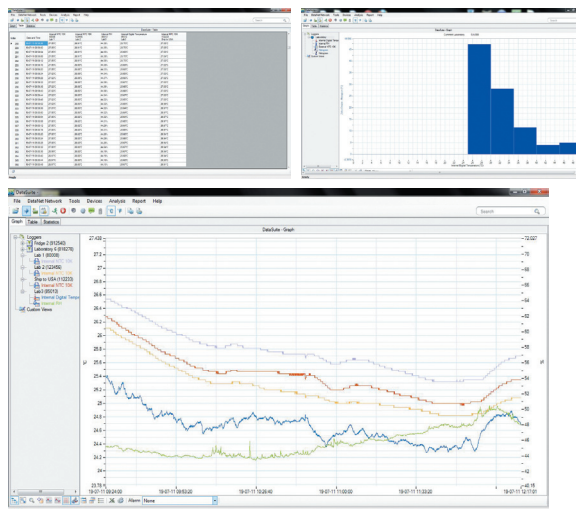
Alarm Features

Alarm setup supporting two levels – Low and High – plus email & SMS notifications in the event of an alarm



Analysis Features

Histogram, Mean Kinetic Temperature, FO Pasteurization, export to Excel and CSV formats, statistics including minimum, maximum and average readings



Specifications

Length and Temperature specifications are provided in Metric and Celsius units

Temperature Range	-40 °C to 40 °C
Accuracy	0.5 °C
LED Indicator	Bi-color LED for sampling and alarm indication
PC Communication	USB 2.0 compliant
Sample Memory	16,000 samples
Sampling Rate	Once every minute to once every 18 hours
Battery Type / Battery Life	CR2032 / Up to 6 months depending on operating conditions
Dimensions	74 mm x 30 mm x 13 mm
Weight	15 g
Compliance	CE, EN12830, IP67