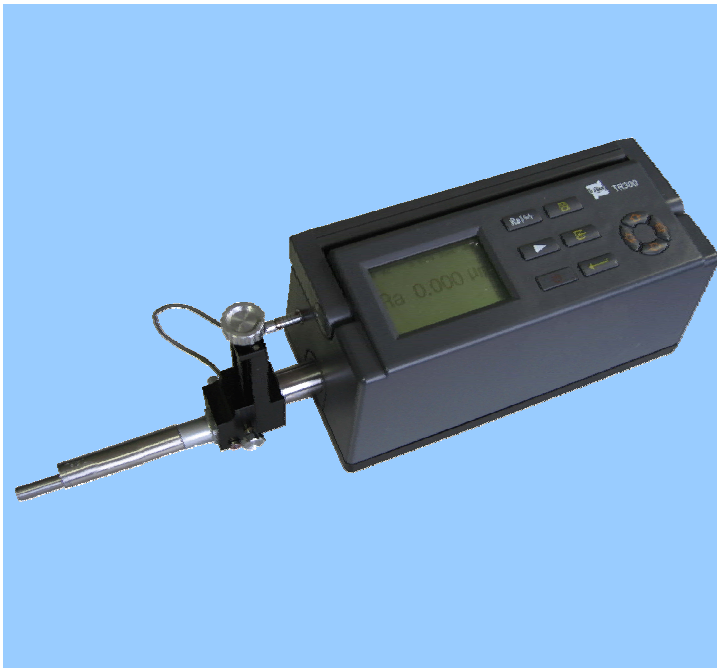


# Surface Roughness Tester TR300

## Features:

- Equipped with 55 kinds of roughness parameters that conform to ISO/DIN/ ANSI/JIS standards.
- Measurement of roughness, waveness and primary profile with a wide measuring range.
- Integrated design for convenient using.
- LCD, digital/graphic display.
- Skidded / skidless pickup makes it so efficient to evaluate curved surface roughness.
- Equipped with advanced Windows software.
- Outputting of data to PC by using RS232 or USB cable is available as well as printing out by printer.



## Technical Specifications

Items	Description
Assessed profile	R (Roughness), W (Waveness), P (Primary profile)
Measuring Range	800 $\mu$ m, 80 $\mu$ m, 8 $\mu$ m
Filtering	RC, PCRC, Gauss
Evaluation Parameters	R: Ra, Rp, Rv, Rt, Rz, Rq, Rsk, Rku, Rc, RS, RSm, Rlo, RHSC, Rpc, Rmr (c), RzJIS, R3y, R3z W: Wa, Wp, Wv, Wt, Wz, Wq, Wsk, Wku, Wc, WS, WSm, Wlo, WHSC, Wpc, Wmr (c), WzJIS P: Pa, Pp, Pv, Pt, Pz, Pq, Psk, Pku, Pc, PS, PSm, Plo, PHSC, Ppc, Pmr (c), PzJIS Rk: Rk, Rpk, Rvk, Mr1, Mr2
Cutoff length	0.08mm, 0.25mm, 0.8mm, 2.5mm, 8mm
Max. driving length	40mm
Analysis graphs	ADC, BAC
Evaluation length	1L-5L
Resolution	0.0001 $\mu$ m/8 $\mu$ m
Display	LCD
Memory	10 groups of primary data
Data output	RS232, USB
Power supply	Li battery / AC adapter
Dimensions	409 $\times$ 96 $\times$ 98 (mm)
Weight	2.3Kg

## Standard delivery:

- Main unit
- Pickup
- Swallow-tailed support
- Specimen Ra
- Screwdriver
- Protection nose

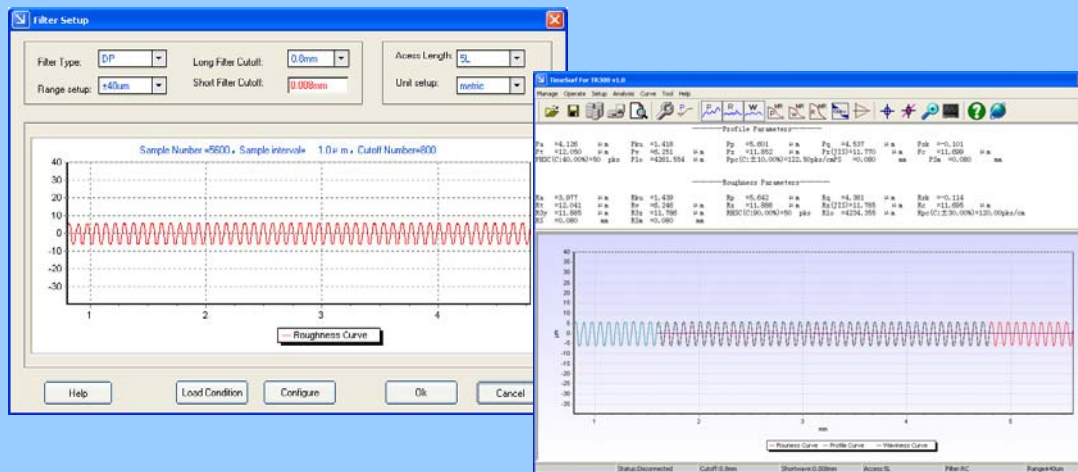
## Optional accessories:

- Printer TA220S
- Communication cable
- PC software (TIMESurf for TR300)



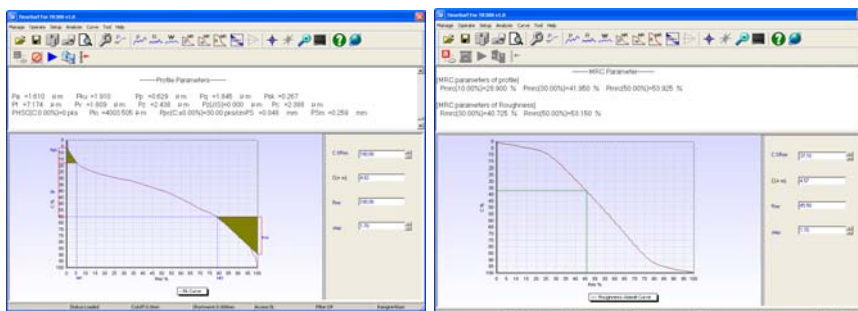
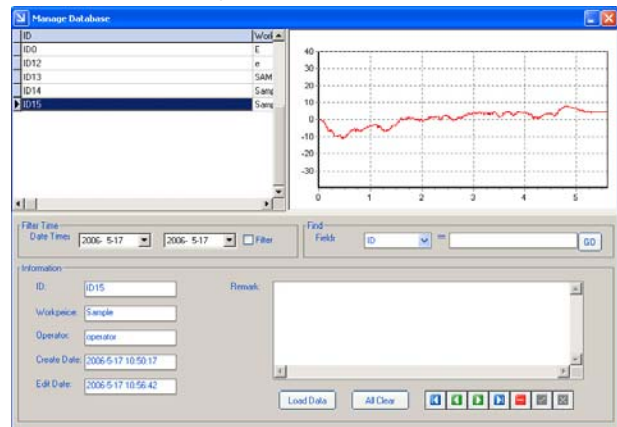
# Surface Roughness Tester TR300

**TIMESurf for TR300** software works for TIME advanced surface roughness tester TR300 managing, analyzing, printing and searching measured data and graphs



## Features

- Operator is allowed to perform evaluation of mean value, max. value, min. value, standard deviation and variance by moving mouse. And the calculation results can be stored in a default Excel file or in a Excel file specified by user
- Equipped with powerful data management function. The collected data can be stored as a file or stored in database for user's searching and browse.
- Variety of curves are displayed as well as all selected parameters and measured results. And all views (including graphs, figures and any other things) displayed can be printed out with the advanced printing function.
- Printing function is designed for operator to make printing report including what is needed about the curves and parameters.



RK curve

BAC curve

